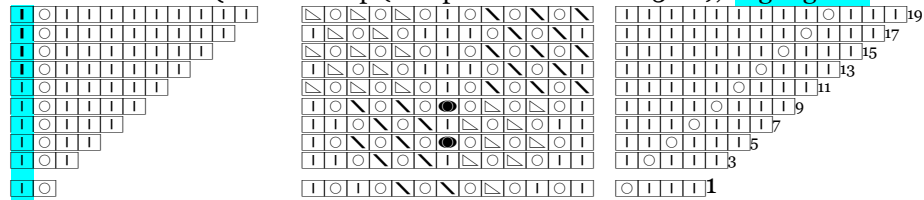


Key:  p2tog  ssk  sl1-k2tog-pssso  knit  purl  K2tog

Shawl Chart 1 (all alt rows p (except K first and last 3 sts), **highlighted** center st only knit 1 time per row)



Shawl Chart 1 Written:

Row 1: k3, yo, (k1,yo) 2 times, ssk, (yo, k2tog) 2 times, (yo, k1) 2 times, yo, k1 (center st), yo, (k1,yo) 2 times, ssk, (yo, k2tog) 2 times, (yo, k1) 2 times, yo, k3

Row 2 and all even rows: purl, K first and last 3 sts

Row 3: K3, yo, k1, k2, (yo, ssk) 2 times, k1, (k2tog, yo) 2 times, k2, yo k1, yo, k2, (yo, ssk) 2 times, k1, (k2tog, yo) 2 times, k2, yo, k3

Row 5: k3, yo, k2, k1, (yo, ssk) 2times, yo, sl1-k2tog-pssso, yo, (k2tog, yo) 2 times, k1, yo, k1, yo, , k1, (yo, ssk) 2 times, yo, sl1-k2tog-pssso, yo, (k2tog, yo) 2 times, k1, k2, yo, k3

Row 7: k3, yo, k3, k2, (yo. Ssk) 2 times, k1, (k2tog, yo) 2 times, k2, yo, k1, yo, k2, (yo, ssk) 2 times, k1, (k2tog, yo) 2 times, k2, k3, yo, k3

Row 9: k3, yo, k4, k1, (yo, ssk) 2 times, yo, sl1-k2tog-pssso, yo, (k2tog, yo) 2 times, k1, yo, k1, k1, (yo, ssk) 2 times, yo, sl1-k2tog-pssso, yo, (k2tog, yo) 2 times, k1, k4, yo, k3

Row 11: k3, yo, k5, (k2tog, yo) 3 times, k1, (yo, ssk) 3 times, yo, k1, yo, (k2tog, yo) 3 times, k1, (yo, ssk) 3 times, k5, yo, k3

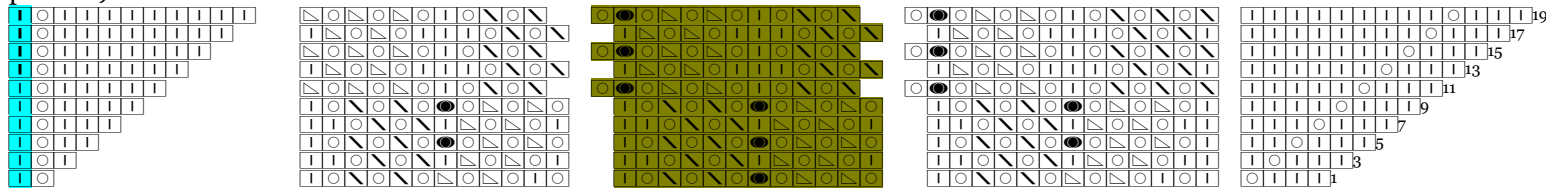
Row 13: k3, yo, k6, k1, (k2tog, yo) 2 times, k3, (yo, ssk) 2 times, k, yo, k1, yo, k1, (k2tog, yo) 2 times, k3, (yo, ssk) 2 times, k1, k6, yo, k3

Row 15: k3, yo, k7, (k2tog, yo) 3 times, k1, (yo, ssk) 3 times, yo, k1, yo, (k2tog, yo) 3 times, k1, (yo, ssk) 3 times, k7, yo, k3

Row 17: k3, yo, k8 k1, (k2tog, yo) 2 times, k3, (yo, ssk) 2 times, k, yo, k1, yo, k1, (k2tog, yo) 2 times, k3, (yo, ssk) 2 times, k1, k8, yo, k3

Row 19: k3, yo, k9 (k2tog, yo) 3 times, k1, (yo, ssk) 3 times, yo, k1, yo, (k2tog, yo) 3 times, k1, (yo, ssk) 3 times, k9, yo, k3

Shawl Chart 2 (all alt rows p(except K first and last 3 sts), **highlighted** section repeated as stitches allow, **highlighted** center st only knit 1 time per row)



Shawl Chart 2 Written:

Row 1: k3, yo, (k1,yo) 2 times, (ssk,yo) 2 times, (k2tog, yo) 2 times, k1, [yo, (ssk, yo) 2 times], sl1-k2tog-ssso, (yo, k2tog) 2 times, yo, k1] repeat as directions state, yo, k1, yo, (ssk, yo) 2 times, (k2tog, yo) 2 times, k1, yo, k1 (center st), yo, (k1,yo) 2 times, (ssk,yo) 2 times, (k2tog, yo) 2 times, k1 [yo, (ssk, yo) 2 times], sl1-k2tog-ssso, (yo, k2tog) 2 times, yo, k1] repeat as directions state yo, k1, yo, (ssk, yo) 2 times, (k2tog, yo) 2 times, k1,, yo, k3

Row 2 and all even rows: purl

Row 3: K3, yo, k1, k2, (yo, ssk) 2 times, k1, (k2tog, yo) 2 times, k2, [k1, (yo, ssk) 2 times, k1, (k2tog, yo) 2 times, k2] repeat as directions state, k1, (yo, ssk) 2 times, k1, (k2tog, yo) 2 times, k2, k1, yo, k1 (center st), yo, k1, k2, (yo, ssk) 2 times, k1, (k2tog, yo) 2 times, k2, [k1, (yo, ssk) 2 times, k1, (k2tog, yo) 2 times, k2] repeat as directions state, k1, (yo, ssk) 2 times, k1, (k2tog, yo) 2 times, k2, k1, yo, k3

Row 5: k3, yo, k2, k1, (yo, ssk) 2times, yo, sl1-k2tog-ssso, yo, (k2tog, yo) 2 times, k1, [(yo, ssk) 2 times, yo, sl1-k2tog-ssso, yo, (k2tog, yo) 2 times, k1] repeat as directions state, (yo, ssk) 2times, yo, sl1-k2tog-ssso, yo, (k2tog, yo) 2 times, k1, k2, yo, k1 (center st), yo, k2, k1, (yo, ssk) 2times, yo, sl1-k2tog-ssso, yo, (k2tog, yo) 2 times, k1, [(yo, ssk) 2 times, yo, sl1-k2tog-ssso, yo, (k2tog, yo) 2 times, k1] repeat as directions state, k1, (ssk, yo) 2times, sl1-k2tog-ssso, yo, (k2tog, yo) 2 times, k1, k2, yo, k3

Row 7: k3, yo, k3, k2, (yo, ssk) 2 times, k1, (k2tog, yo) 2 times, k2, [k1, (yo, ssk) 2 times, k1, (k2tog, yo) 2 times, k2] repeat as directions state, k1, (yo, ssk) 2 times, k1, (k2tog, yo) 2 times, k2, k3, yo, k1 (center st), yo, k3, k2, (yo, ssk) 2 times, k1, (k2tog, yo) 2 times, k2, [k1, (yo, ssk) 2 times, k1, (k2tog, yo) 2 times, k2] repeat as directions state, k1, (yo, ssk) 2 times, k1, (k2tog, yo) 2 times, k2,, k3, yo, k3

Row 9: k3, yo, k4, k1, (yo, ssk) 2times, yo, sl1-k2tog-ssso, yo, (k2tog, yo) 2 times, k1, [(yo, ssk) 2 times, yo, sl1-k2tog-ssso, yo, (k2tog, yo) 2 times, k1] repeat as directions state, (yo, ssk) 2times, yo, sl1-k2tog-ssso, yo, (k2tog, yo) 2 times, k1, k4, yo, k1 (center st), yo, k4, k1, (yo, ssk) 2times, yo, sl1-k2tog-ssso, yo, (k2tog, yo) 2 times, k1, [(yo, ssk) 2 times, yo, sl1-k2tog-ssso, yo, (k2tog, yo) 2 times, k1] repeat as directions state, k1, (ssk, yo) 2times, sl1-k2tog-ssso, yo, (k2tog, yo) 2 times, k1, k4, yo, k3

Row 11: k3, yo, k5, (k2tog, yo) 3 times, k1, yo, (ssk, yo) 2 times, sl1-k2tog-ssso, yo, [(k2tog, yo) 2 times, k1, yo, (ssk, yo) 2 times, sl1-k2tog-ssso, yo] repeat as directions state, (k2tog, yo) 2 times, k1, (yo, ssk)3 times, k5, yo, k1(center st), yo, k5, (k2tog, yo) 3 times, k1, yo, (ssk, yo) 2 times, sl1-k2tog-ssso, yo, [(k2tog, yo) 2 times, k1, yo, (ssk, yo) 2 times, sl1-k2tog-ssso, yo] repeat as directions state, (k2tog, yo) 2 times, k1, (yo, ssk)3 times, k5, yo, k3

Row 13: k3, yo, k6, k1, (k2tog, yo) 2 times, k3, (yo, ssk) 2 times, k1, [(k2tog, yo) 2 times, k3, (yo, ssk) 2 times, k1] repeat as directions state ,(k2tog, yo) 2times, k3, (yo, ssk) 2 times, k1, k6, yo, k1 (center st), yo, k6, k1, (k2tog, yo) 2 times, k3, (yo, ssk) 2 times, k1, [(k2tog, yo) 2 times, k3, (yo, ssk) 2 times, k1] repeat as directions state,(k2tog, yo) 2times, k3, (yo, ssk) 2 times, k1, k6, yo, k3

